



# Content

<i>About Us</i>	<b>3</b>
<i>Core Team</i>	<b>4</b>
<i>Manufacturing Facility</i>	<b>5</b>
<i>Packaging</i>	<b>6</b>
<i>Granites</i>	<b>7</b>
<i>Marbles</i>	<b>15</b>
<i>Sand Stones</i>	<b>17</b>
<i>Slate Stones</i>	<b>19</b>
<i>Landscaping Stones</i>	<b>21</b>
<i>Lime Stones</i>	<b>23</b>
<i>Minerals</i>	<b>23</b>
<i>Contact Details</i>	<b>24</b>

# About Us

Welcome to StoneVault Exports (India) Pvt. Ltd., a leading company catering to the Global Market for Indian Natural Stones. Started in 2013, we began relationship with Earth's deep crust and have continued to chase extreme reaches of human excellence every day since then. A passion that achieves a competitive finesse noticed and appreciated from clients across border.

The emphasis has always been on a highly evolved and meticulously crafted technological process to ensure consistently high quality standards, low production cost and a forward looking attitude that is informed about the growing needs of the challenging world market, reaching far and wide into diverse global markets like North America, Europe, Far East and MENA Region (Middle East and North Africa). We forever explore the far reaches of global standards.

We are able to feed all the requirements of the client by offering the quality stones, at the most competitive prices and completely time bound deliveries. We are presently cutting the stones coming from all part of India. We have a team of expert and skilled quality controllers, who strictly inspect our entire process, right from the procurement of raw material till the final dispatch, in our processing Unit located at Hosur near Bangalore, "The Granite capital of India".

With their full dedication and hard work, we are able to craft our offered products as per the global standards. Our spacious warehousing and packaging unit ensures the safe storage and packaging of products.

The Company is specialized in the supply of both big Gangsaw Slabs, Vertical Slabs and Tiles. We continue to evolve by touching the latest quality, design and development trends.

StoneVault is all about "Redefining Stones" at its best to create smiles.

# Core Team



**Mr. S. N. Taparia**  
*Chairman*

He is the Founder of the Maheshwari Group and Chairman of the Company. He began his business in 1975 by trading in automobiles spares in Beawar. In 1985, he expanded his business in industrial and agricultural equipments. He has been associated with many reputed brands in the industry like CG, Texmo, Honda, Anest Iwata, Greaves, Fenner, Godrej and many more. In 2007, he diversified in stone business by commencing Mineral Grinding Unit in Rajsamand, and by 2010 he added one more. He has received many awards and accolades for outstanding work in field of distribution of electrical motors, including the prestigious “North No. 2 Award” in 2011 and “Rajasthan No. 1 Dealer” from last 10 consecutive years since 2005, by Crompton Greaves Ltd., Mumbai.

---

**Mr. Piyush Taparia**  
*CEO*

He has become the Managing Director of the Company in 2014. He is having the prestigious financial and management degrees as CA, CFA and MBA (Finance). He has been recognized at many national platforms during his academic and post academic career. He joined management team in 2006 of the group and was in charge of business development and diversification. He has an extensive background and experience in the field of Finance, Strategic Planning, Export Marketing, and International Business Relations.



**Mr. Hitesh Mantri**  
*Head – Marketing*

He has been associated with company since 2014. He holds a Management degree in Marketing from Delhi University. With the wide experience in stone industry, he is in charge of Projects Marketing and Domestic Marketing. Under his flagship, company has already executed couple of prestigious projects like ISRO at SrihariKota and JSPL at Angul.

---

**Mr. Ummed Singh**  
*Head – Production and Quality Control*

He has been associated with group since 2007 and associated with the company since 2014. He is in charge of Procurements, Production and Quality Control. He is dedicatedly working on two and most important pillars of granite industry that is quality, benchmarking global standards and time bound deliveries.



# Facility

Gantry



We ensure the quality production of finest granite.



Multi Cutter

Polishing Machine



# Packaging

We continuously update our Logistics & Supply Chain mechanism for order Fulfillment. We have a very close follow up & manual check on the Quality & order completion. The packing of material is done as per the buyer needs. The standard practice is seaworthy wooden pallets with polythene sheets for slabs and corrugated seaworthy wooden crates with polythene sheets and thermo-cool for tiles and cut to size orders. The logistic part for overseas consignments is 20 ft heavy duty containers and for domestic trades it is heavy body open roof lorries. We have proper packing, crating, stuffing and dispatch of cargo thus ensure safety of the material in transit.

Gangsaw Slabs Packaging



Vertical Slabs Packaging



Tiles Packaging





# Granites

Granite began its life as liquid magma within the earth's core. Granite is a hard, crystalline, ingenious rock formed from extreme heat, comprised of various minerals such as quartz and feldspar. Dimensional granite specifications include high load bearing capacity, flexibility of cutting, ability to yield thin and large slabs and above all durability. Granite is a very strong and durable stone. It takes heavy gloss polish, popularly used as architectural stone for interior and exterior walls, floors and monumental stone.

## SPECIFICATIONS

### Gang saw Slabs:

270 x 160 CM+ (20 / 30 / 40 MM Thick)

**Vertical Slabs:** 180 x 60 CM+ (18 / 20 / 30 MM Thick)

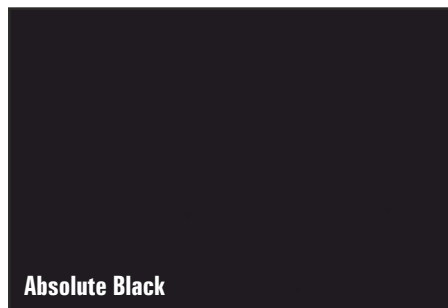
**Tiles:** 30x30, 40x40, 50x50, 30x60, 40x60, 60x60, 60x90, 90x90 CM & Cut To Size. (18 / 20 / 30 MM Thick)

**Finishes:** Polished, Honed, Leather, Flamed, Antique

**Black Color Granite Collection**



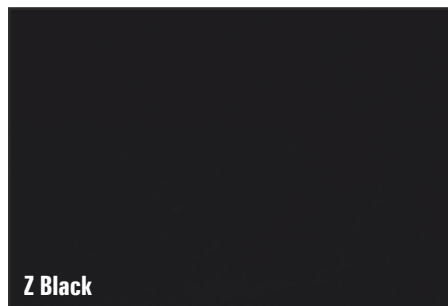
**Black Galaxy**



**Absolute Black**



**Telephone Black**



**Z Black**



**Black Pearl**



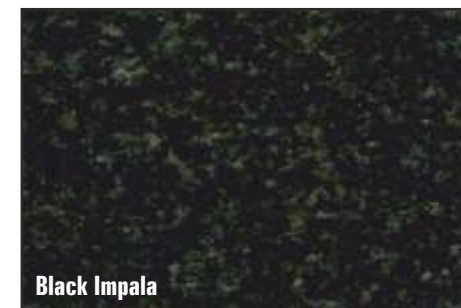
**Rajasthan Black**



**Black Marquina**



**G 20**

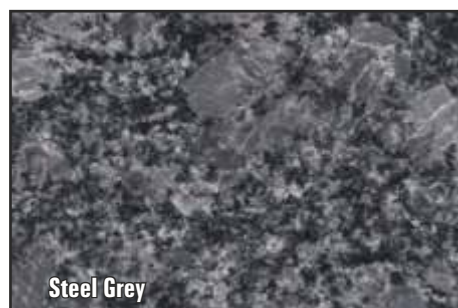


**Black Impala**

**Grey Colour Granite Collection**



**Sira Grey**



**Steel Grey**



**Sadarali Grey**



**Amedious**



**White Colour Granite Collection**



**Amba White**



**China White**



**Colonial White**



**Imperial White**



**White Galaxy**



**Jasmin White**



**River White**



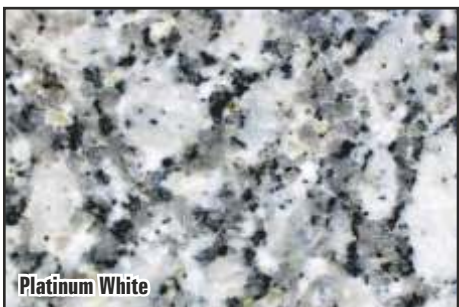
**Kashmir White**



**Meera White**



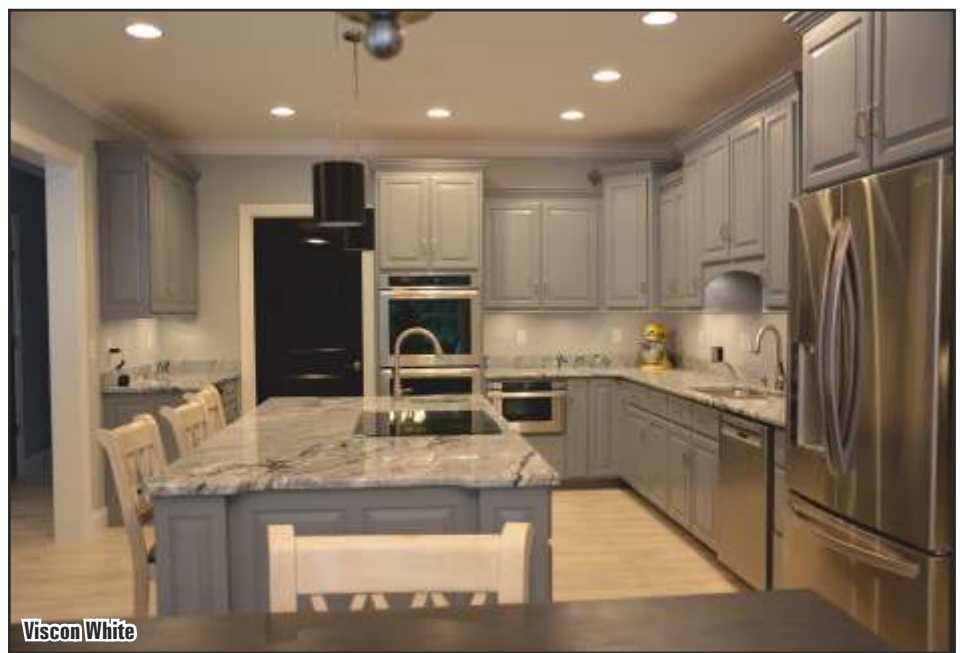
**Moon White**



**Platinum White**



**Kuppam White**

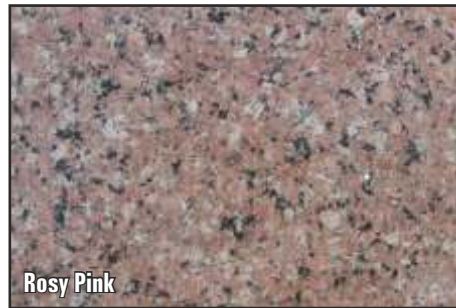


**Viscon White**

Red Color Granite Collection



Chima Pink



Rosy Pink



Multi Red 2



Multi Red 3



Multi Red 1



Indian Juprana



Imperial Red



Rubi Red



Kanakpura Multi Red



Lakha Red



Cat Eye

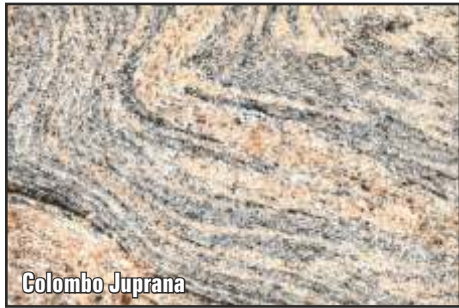
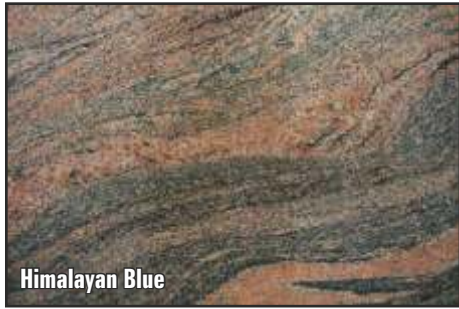


Jhansi Red

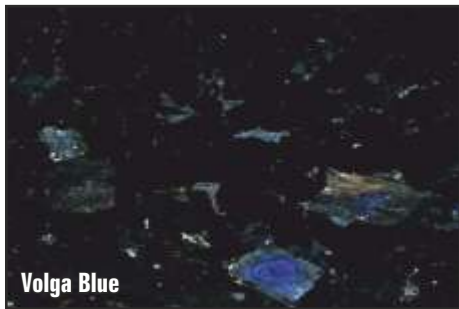
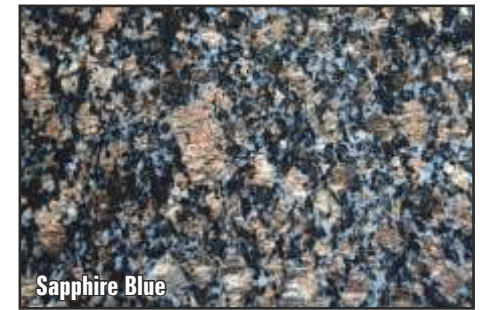


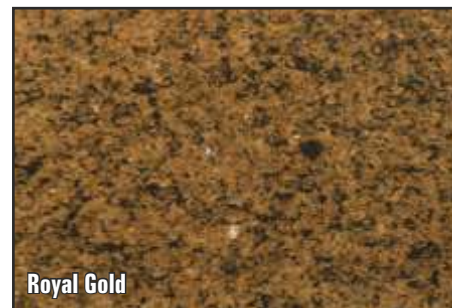
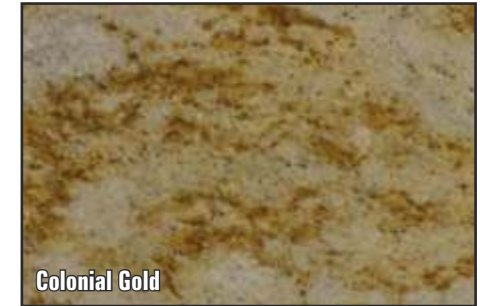
Copper Silk

**Multi Colour Granite Collection**



**Blue Colour Granite Collection**





**Brown Color Granite Collection**



**Aadhunik Brown**



**Asian Top**



**Brown Pearl**



**Tan Brown 2**



**English Teak**



**Tiger Skin**



**Pegasus Brown**



**Baltic Brown**



**Coffee Brown**



**Loveria**



**Icon Brown**



**Leather Brown**



**Bash Paradise**



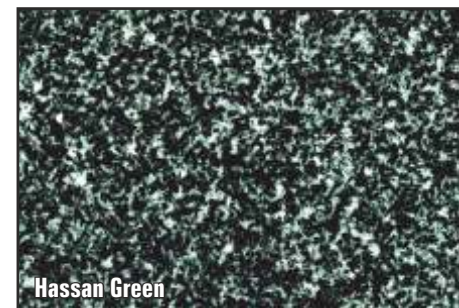
Apple Green



Flash Green



French Green



Hassan Green



Sea Weed Green



Kuppam Green



Green Labradorite



Bala Flower



Surf Green



Tropical Green



Deccan Green



Coral Green



Forest Green

# Marble

Marble is a metamorphic rock resulting from the re-crystallization of limestone softened from heat and pressure. Main constituents are calcium and dolomite. Hardness ranges from 2.5 to 5 on the MOH scale. Marble is usually heavily veined and shows lots of grains. Dimensional marble specifications include smooth textures, ease in crafting sculptures, hence highly manageable. It is a reasonably strong and durable stone. It takes good polish, popularly used as wall claddings, floors, skirting's, table tops, treads and risers, sculptures, artifacts, etc.

## SPECIFICATIONS

### Rough Blocks:

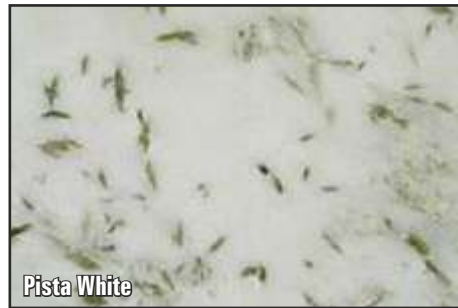
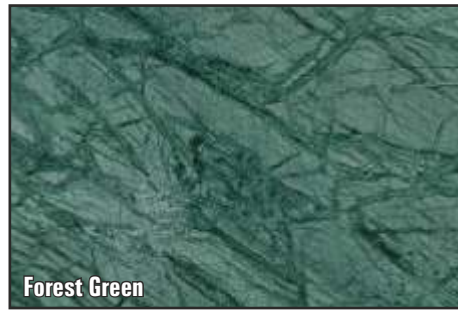
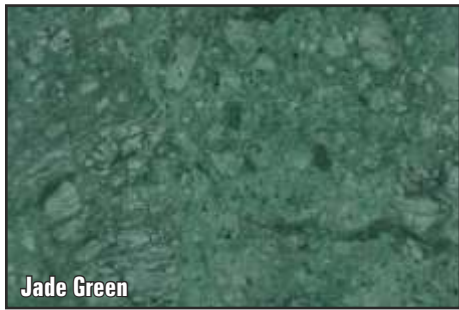
210 x 140 x 100 CM+ **Slabs:** 210 x 140 CM+ (18 / 20 / 30 MM Thick)

### Tiles:

30x30, 40x40, 50x50, 30x60, 40x60, 60x60  
60x90, 90x90 CM & Cut To Size.  
(10 / 18 / 20 / 30 MM Thick)

### Finishes:

Polished, Honed, Shot Basted, Antique







# Sandstone

Sandstone is a sedimentary stone that is typically the result of quartzite stone being eroded and redeposit by either wind or water. Sandstone mostly consists of quartz, silica, iron oxide and calcium carbonate and is durable, weather, acid and thermal resistant and has crushing strength.

They can at most take a honed polish, and are used as garden and commercial landscapes, exterior wall cladding, ,etc. They come in an array of colors & shades and can be chiseled and dressed to a smooth surface in various attractive shapes.

## SPECIFICATIONS

### Slabs:

200 x 60 CM+ (18 / 20 / 30 MM Thick)

**Tiles:** 30x30, 40x40, 50x50, 30x60, 40x60, 60x60  
60x90, 90x90 CM & Cut To Size.  
(18 / 20 / 30 MM Thick)

### Finishes:

Polished, Honed, Leather, Flamed, Antique, Shot Basted, Sand Blasted, Bush Hammered



The image shows two bright orange chairs with black legs positioned against a wall of grey stone tiles. The tiles have a rough, textured appearance and are arranged in a staggered pattern. The floor is made of dark wood planks. The overall scene is well-lit, highlighting the textures of the stone and the vibrant color of the chairs.

# Slate & Quartzite

Slate has a unique look, and is an extraordinary and versatile material. Slate has very low porosity that makes it stain resistant and easy to maintain. Slate has a fine to medium grained surface texture. It renders a very graceful, natural finish to any building or home.

Quartzite can be clefted like slate, or can be smooth and more similar to marble and granite in appearance. The major difference between slate and quartzite is quartzite's ability to withstand many freeze-thaw cycles.

## SPECIFICATIONS

### Tiles:

10x20, 10x30, 10x40, 10x60 CM  
20x20, 20x40, 20x60 CM  
30x30, 30x60, 60x60, CM

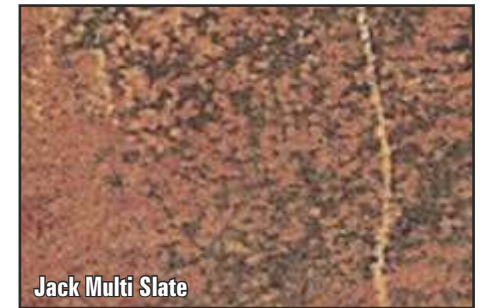
### Thickness:

Natural Split: 10-15 MM, 10-20 MM  
Calibrated / Sawn: 10, 12, 15, 18, 20 MM

### Edges:

Hand Cut, Machine Cut

**Finishes:** Natural, Brushed, Honed, Polished, Tumbled, Antique





# Landscaping

Enjoy the great outdoors in style and comfort with our broad range of landscaping materials. Customize your driveway, pool, garden and walkway with various colors of Cobbles and Pebbles for completely natural look.

## COBBLES SPECIFICATIONS

Standard Sizes: 10x10, 14x10, 14x14, 14x20cm, etc.  
Thickness: 3-5, 4-6, 5-7, 6-8, 7-9, 8-10cm,  
Edges: Hand Cut, Machine Cut  
Finishes: Natural, Tumbled



Pabbles

Wall Panel

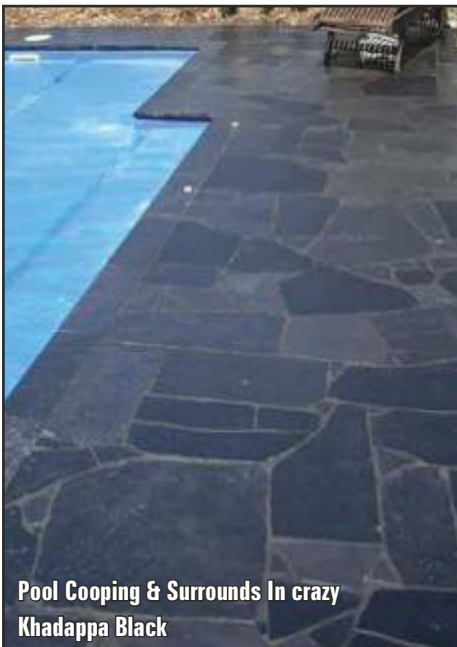


Kandla Grey Cobbles

Mandana Red Cobbles

Mint Cobbles

Granite Cobbles



Pool Cooping & Surrounds In crazy  
Khadappa Black

Stepping Stone in Rainbow

Walling Stone in Autumn Brown

ModakSteps

**Limestone** is a rock formed from sedimentary process where underground and underwater comprised primarily of calcium deposits of shell and bone. Common colors are black, grey, white, yellow or brown. Limestone is known to contain lime from sea water, and that's why the nomenclature.

**SPECIFICATIONS**

- Tiles:** 10x20, 10x30, 10x40, 10x60 CM 20x20, 20x40, 20x60 CM 30X30, 30X60, 60x60, 60x90, 30x120 CM
- Thickness:** Natural Split: 20-30 MM, 25-35 MM Calibrated / Sawn: 18, 20, 22, 25 MM
- Edges:** Hand Cut, Machine Cut
- Finishes:** Natural, Brushed, Tumbled, Honed, Polished, Sand Blasted, Bush Hammered



**Mineral** has multiple quality varieties (grades) that determine its applicability in a given industry. After mining the rocks in a crude form were sorted for quality via processing machines. Thereafter, they are downsized in a variety of sizes, depending on the requirement of a customer to fulfill various industrial needs.

**SPECIFICATIONS**

- Lumps :** 50 – 150 MM
- Chips :** 1 – 5 MM
- Powder :** 325 Mesh (Microns) – 30 Mesh (Microns)
- Type:** Sodium Feldspar, Potassium Feldspar, Quartz, Ball Clay, Limestone, Dolomite

**StoneVault®**  
*Stones Redefined*

**StoneVault Export (India) Pvt. Ltd.**

**Unit :**

# 194, Gollapalli Village, Chennapalli Post, Shoolagiri Union,  
Hosur Taluk, Krishnagiri District, Tamil Nadu - 635117, India

**Branch :**

# 33-34, Mangal Colony, Ajmer Road,  
Bewar, District Ajmer, Rajasthan - 305901, India

M | +91 93094 12200, +91 97866 12200 (Piyush)

M | +91 98290 09789 (Hitesh)

T | +91 1462 253251

E | [stonevaultexport@gmail.com](mailto:stonevaultexport@gmail.com)

W | [www.stonevault.in](http://www.stonevault.in), [www.stonevaultexport.co.in](http://www.stonevaultexport.co.in)

Skype | stonevault